

Available For Lease

The Villages of Fox Hollow



SWQ FM 548 at FM 1641 Forney, Texas

At a Glance

Leasable Area

Pads: Flexible
Retail Space: 23,200 sf

Rental Rates

Pads: \$12-14 psf
Retail Space: \$18-22 psf

Traffic Counts

FM 1641 8,000 CPD
FM 548 4,400 CPD

Demographics

	1 Mile	3 Mile	5 Mile
Population	1,216	11,458	17,451
Average HH Income	\$52,991	\$76,758	\$81,267
Median Age	29	33	34

(Based on 2005 estimates)

Comments

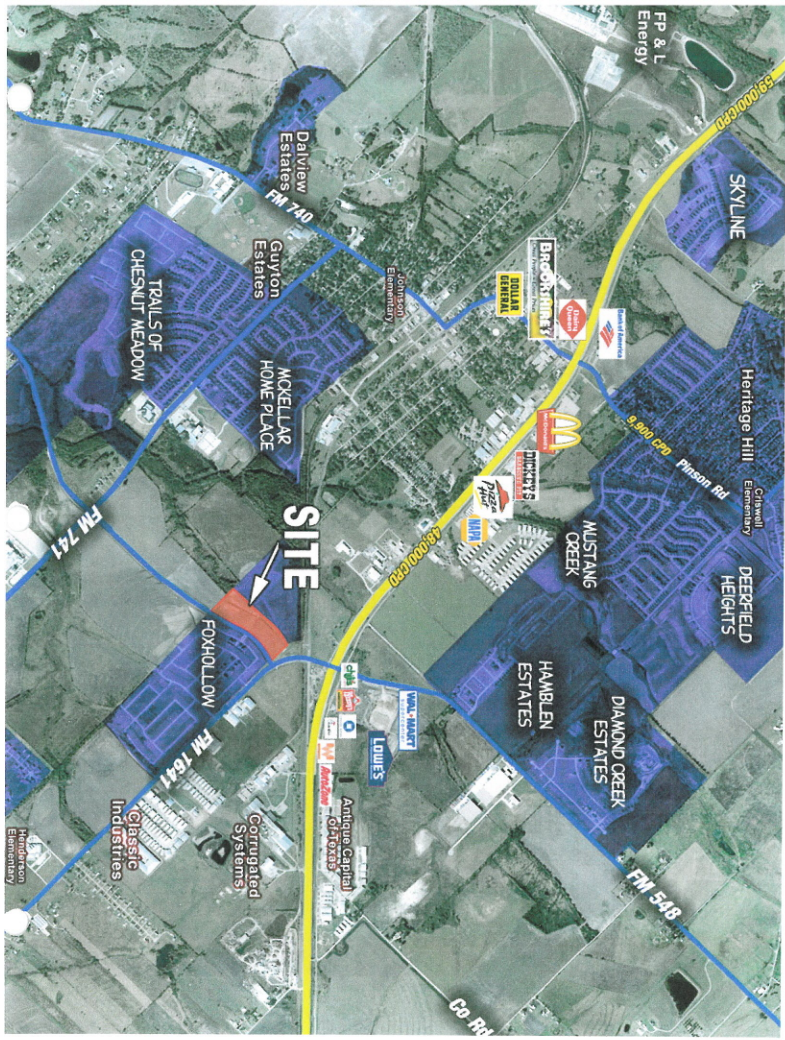
Pad sites and retail space available fronting FM 548, south of US 80 in Forney. The site is directly across FM 548 from Fox Hollow, a master planned development platted for 1,245 homes. It is located directly to the south of Mustang Crossing (a Wal-Mart anchored retail center) and directly to the north of Forney High School and the future Claybon Elementary. Currently, there are approximately 5,000 lots platted for residential development within 2 miles of the property.

Contact

Maury Levy, Sr. Vice President
214.252.1128
mlevy@ucrrealty.com

Carter Butler, Associate
214.252.1164
cbutler@ucrrealty.com

United Commercial Realty
7001 Preston Road, Suite 222
Dallas, Texas 75205
214-526-6262
214-523-0800 (fax)
www.ucrrealty.com



SKYLINE

Heritage Hill

Chawall Elementary

DEERFIELD HEIGHTS

MUSTANG CREEK

HAMBLEN ESTATES

DIAMOND CREEK ESTATES

FM 548

FP & L Energy

FM 1000 CRD

8,900 CPD

48,000 CPD

FM 740

Guyton Estates

MOKELLAR HOME PLACE

TRAILS OF CHESNUT MEADOW

FM 741

FOXHOLLOW

FM 1641

Classic Industries

Corrugated Systems

LOWE'S

Antique Capital

Corrugated Systems

Hamblen Elementary

Brookshire's

DOLLAR GENERAL

McDonald's

Dunkin'

Pizza Hut

NAPA

EMERSON Electronics

WALMART