

∞

*Heatley Capital*

**Forney / FM 548 & FM 741**

**Price**

From \$4.50 / Sq Ft

**Size:**

Acres—Sites Available

**Access/Frontage:**

US 80, FM 548, FM 1641, & FM 741

**Zoning**

Commercial/Retail

**Utilities**

At property

**Topography**

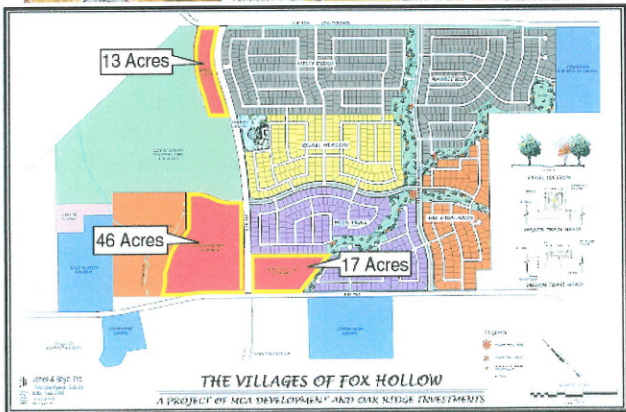
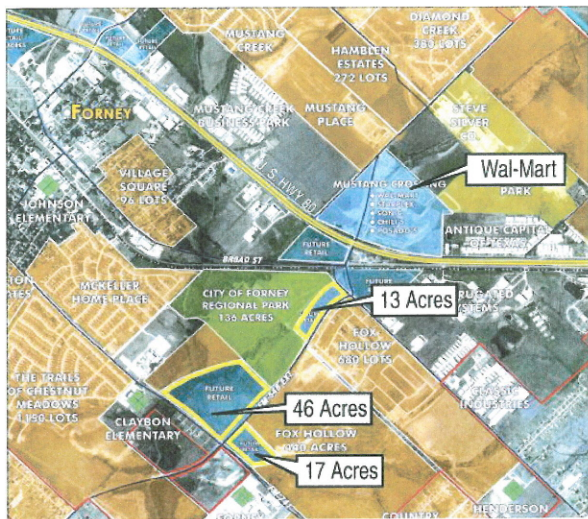
Level

**Location:**

Across Freeway from new Wal-Mart and Starplex Movie Theatres. Great highway access with 25,000 lots planned or underway in Forney is making this site look very attractive for a variety of uses.



Mike Heatley or Bryan Crow, Heatley Capital Corporation  
 Phone: 972.888.9948; Fax: 972.888.9942; [www.heatleycapital.com](http://www.heatleycapital.com)



**THE VILLAGES OF FOX HOLLOW**

A PROJECT OF NEA DEVELOPMENT AND OUR RIDE INVESTMENTS

Mike Heatley or Bryan Crow, Heatley Capital Corporation  
 Phone: 972.888.9948; Fax: 972.888.9942; [www.heatleycapital.com](http://www.heatleycapital.com)