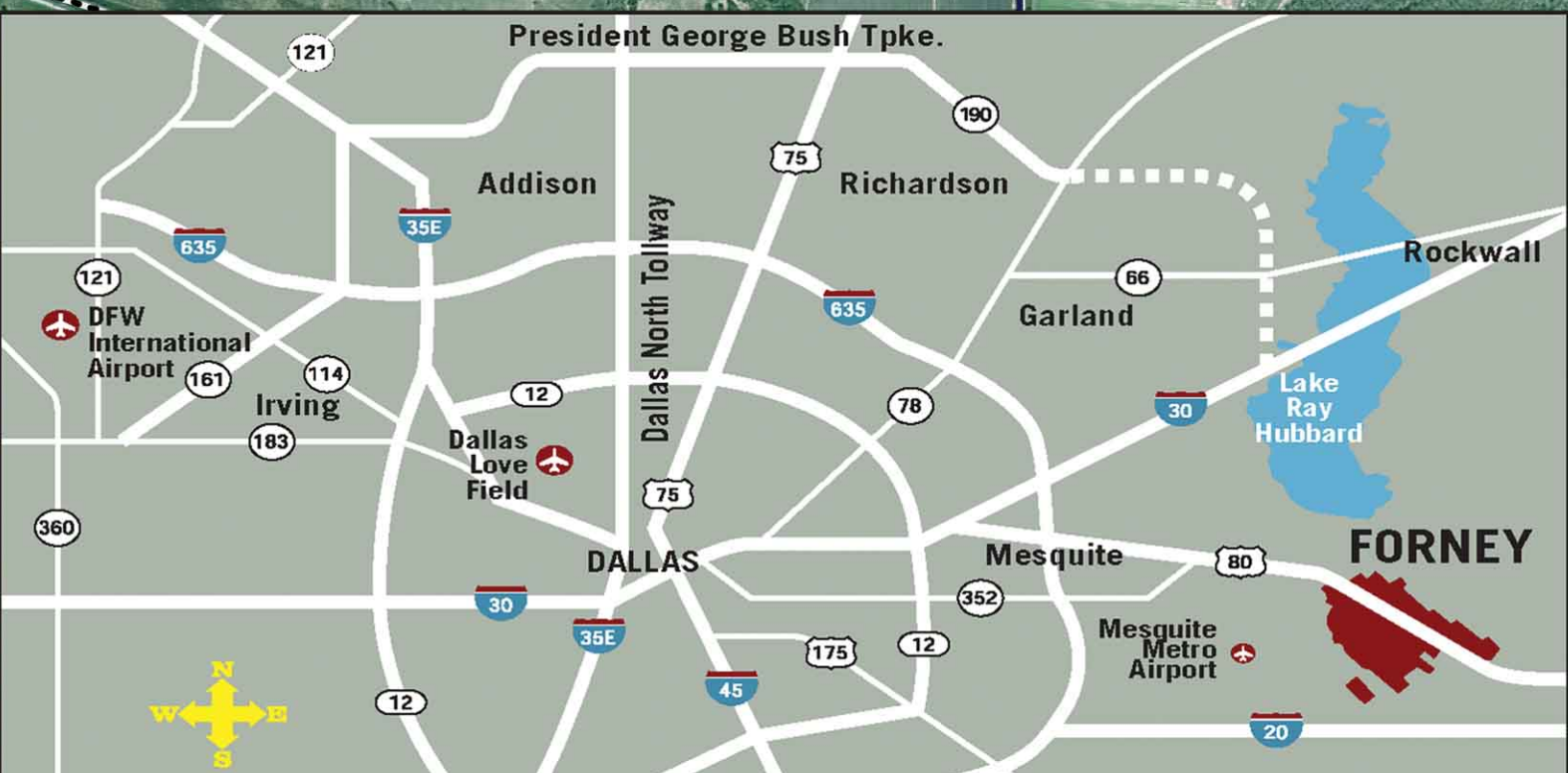


TO DALLAS 21 MILES
 TO DALLAS LOVE FIELD AIRPORT 29 MILES
 TO DFW INTERNATIONAL AIRPORT 42 MILES

TO ROCKWALL-I 30
 13 MILES

TO TERRELL 11 MILES



Major Area Employers

- | | |
|------------------------------------|--------------------------------|
| Forney Independent School District | NextEra Energy |
| Orange County Container Group | Classic Industries |
| Walmart | Family Medical |
| Steve Silver Company | City Bank Texas |
| Lowe's Home Improvement | Medical & Dental Family Circle |
| City of Forney | Oncor Electric Delivery |
| Intex Electric | Eric L. Davis Engineering |
| Brookshire's Food & Pharmacy | Amercian National Bank |
| Premier Services | SCIntegrity |

FORNEY DEMOGRAPHICS

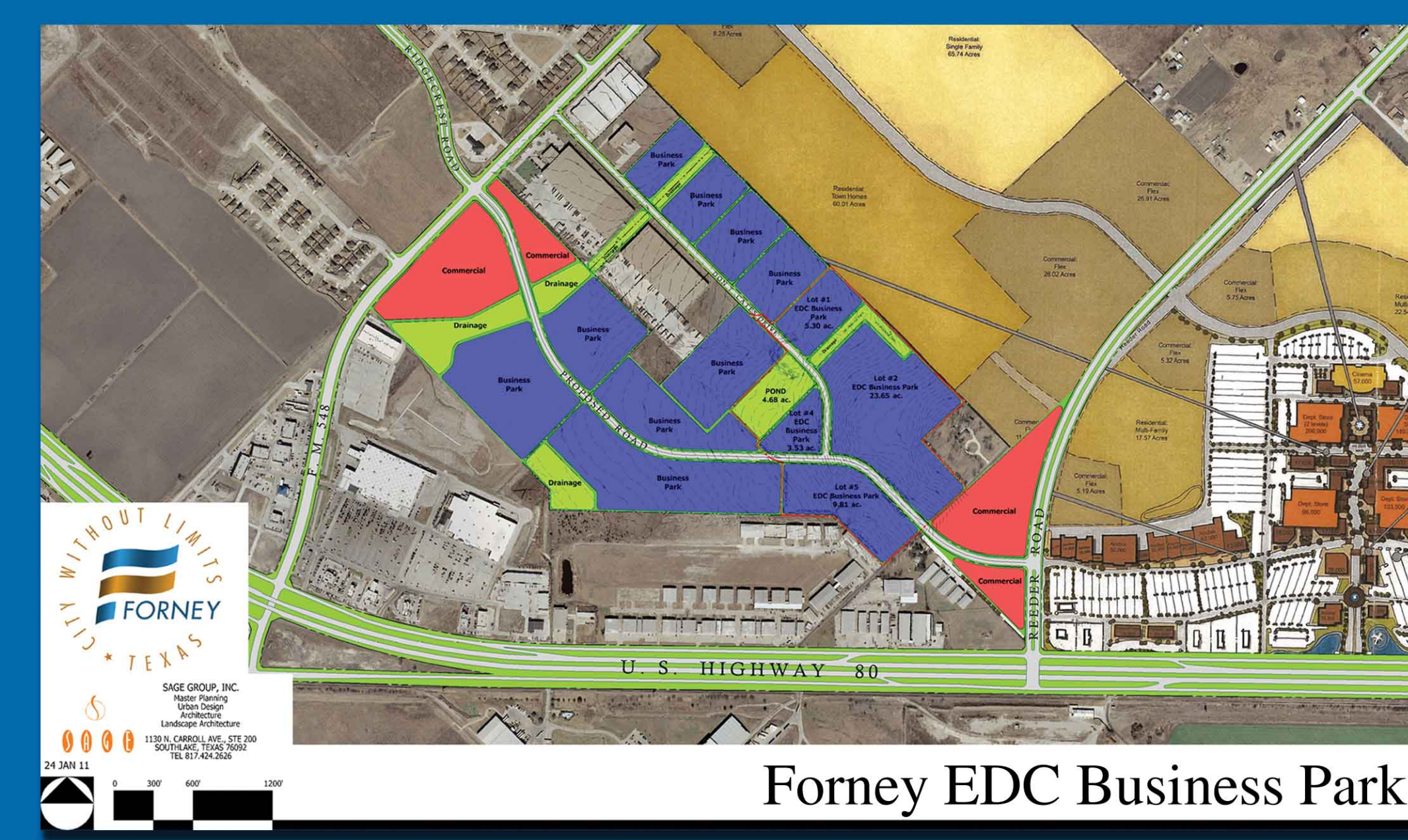
AREA	2012 POPULATION	2017 PROJECTED	Growth %	Average HH Income	Households	Owner Occupied	Med. Home Value
CITY	15,060	18,523	23%	\$80,579	\$5,600	87%	\$160,107
NEIGHBORHOOD	39,215	44,165	16%	\$81,844	\$12,118	88%	\$159,667
10 MINUTE DT	35,454	42,951	21%	\$81,117	\$11,657	84%	\$151,750
15 MINUTE DT	198,565	214,894	8%	\$64,468	\$20,438	64%	\$127,371

MEDIAN NEW HOME VALUE IN THE FORNEY AREA \$191,000+
 Post Secondary Education 57%
 Average age 33
 Drive Time to Work 35 Minutes

DALLAS BUSINESS JOURNAL 2012 BOOK OF LISTS
#15 TOP GROWING DFW CITIES

LEGEND

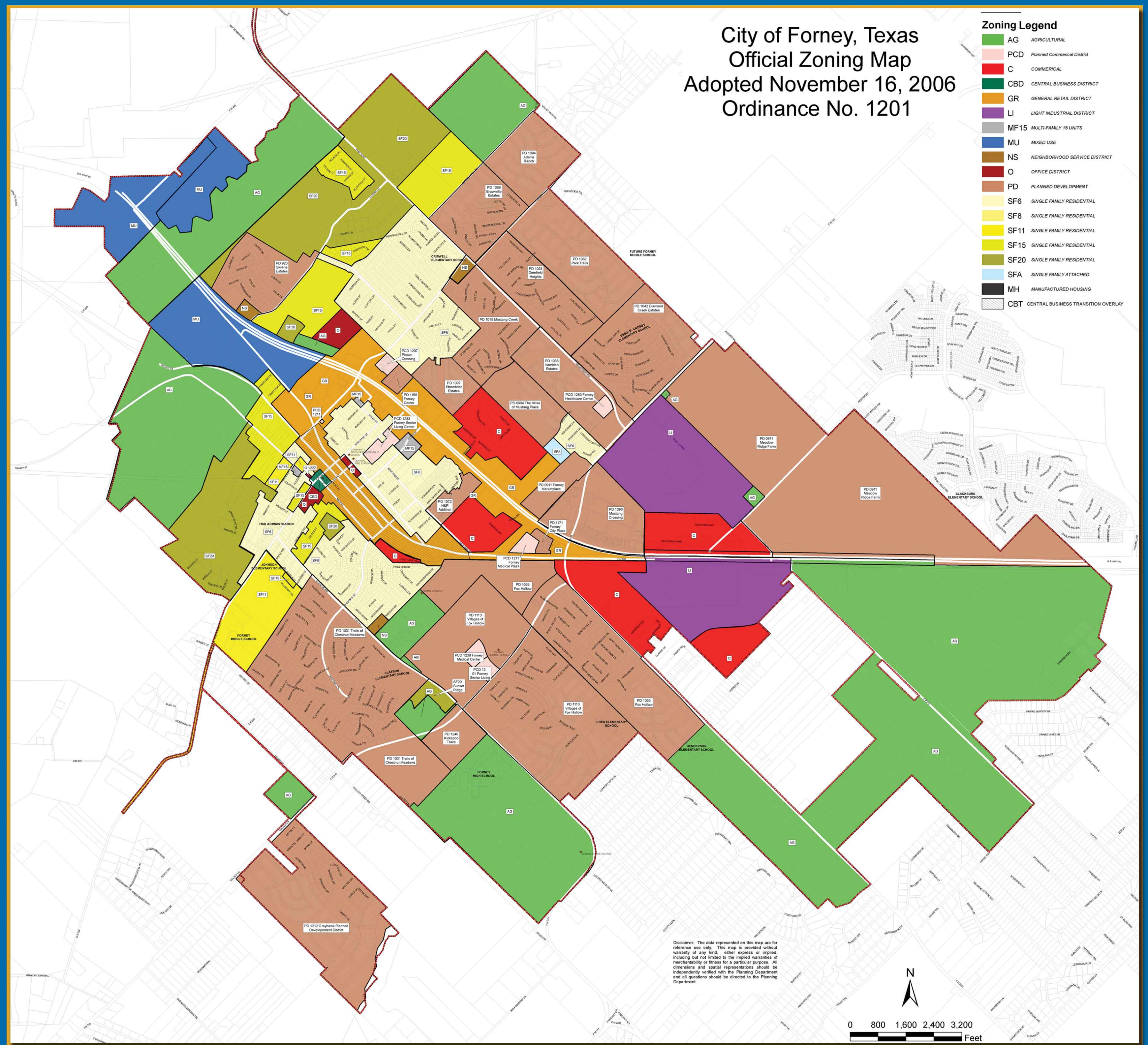
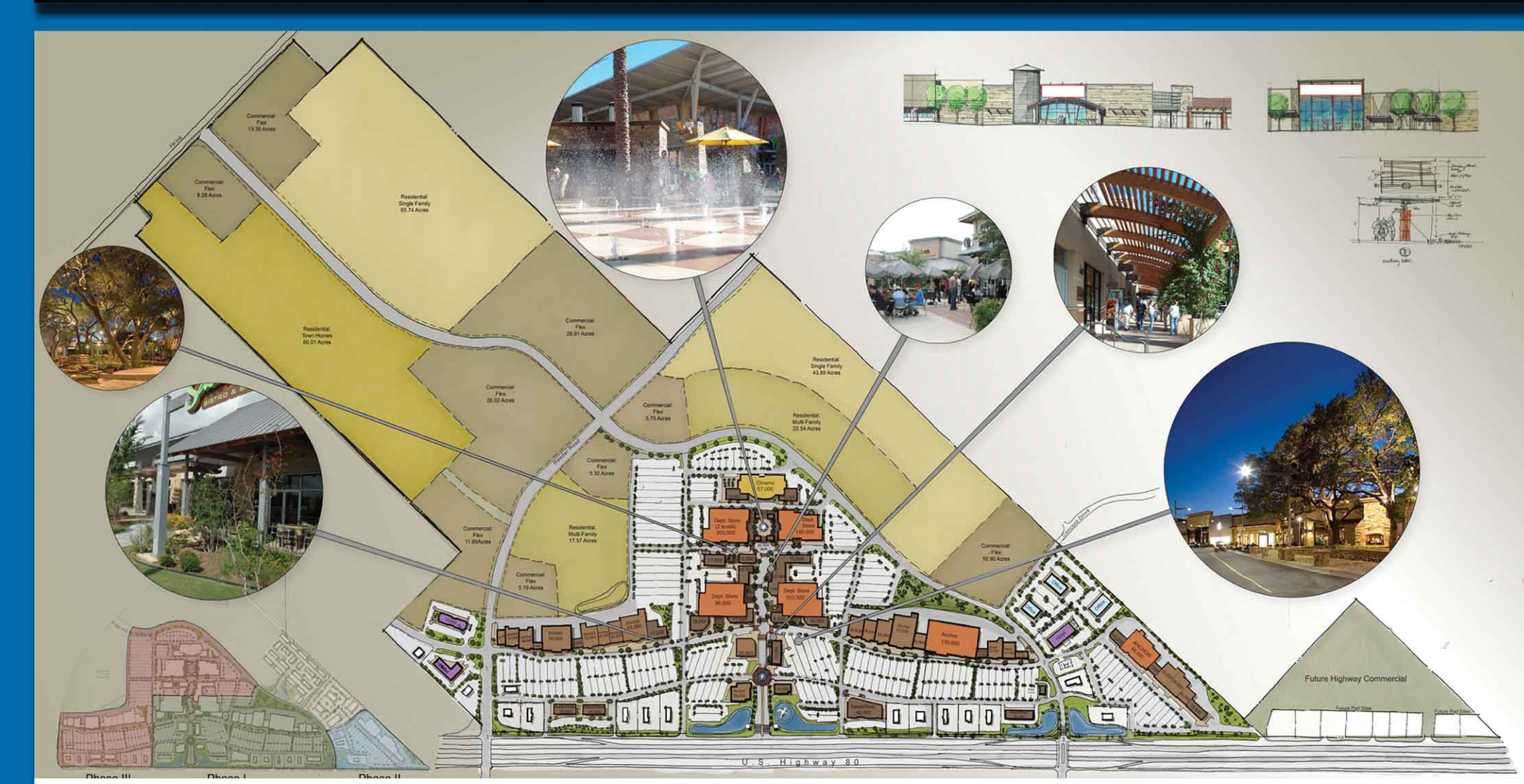
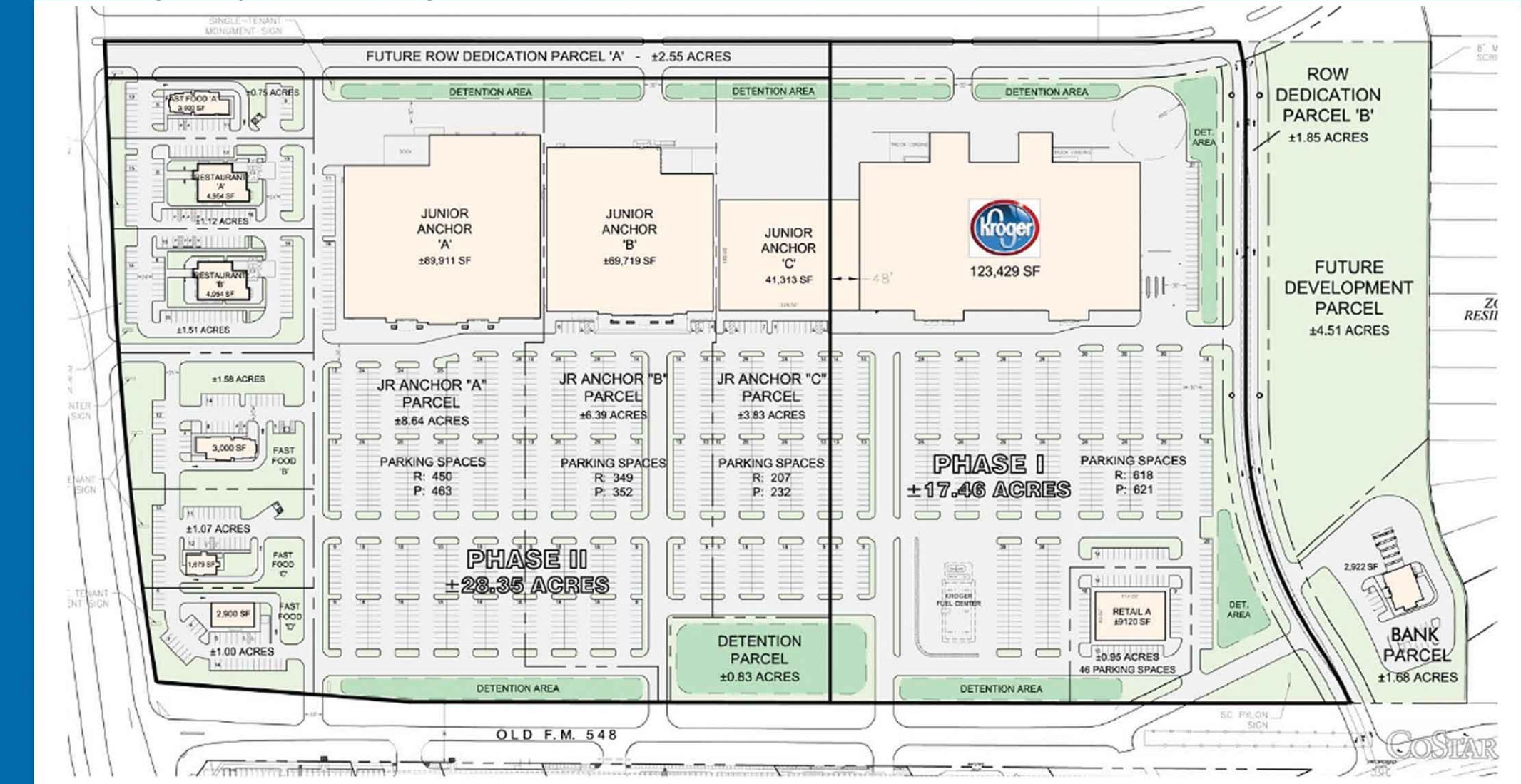
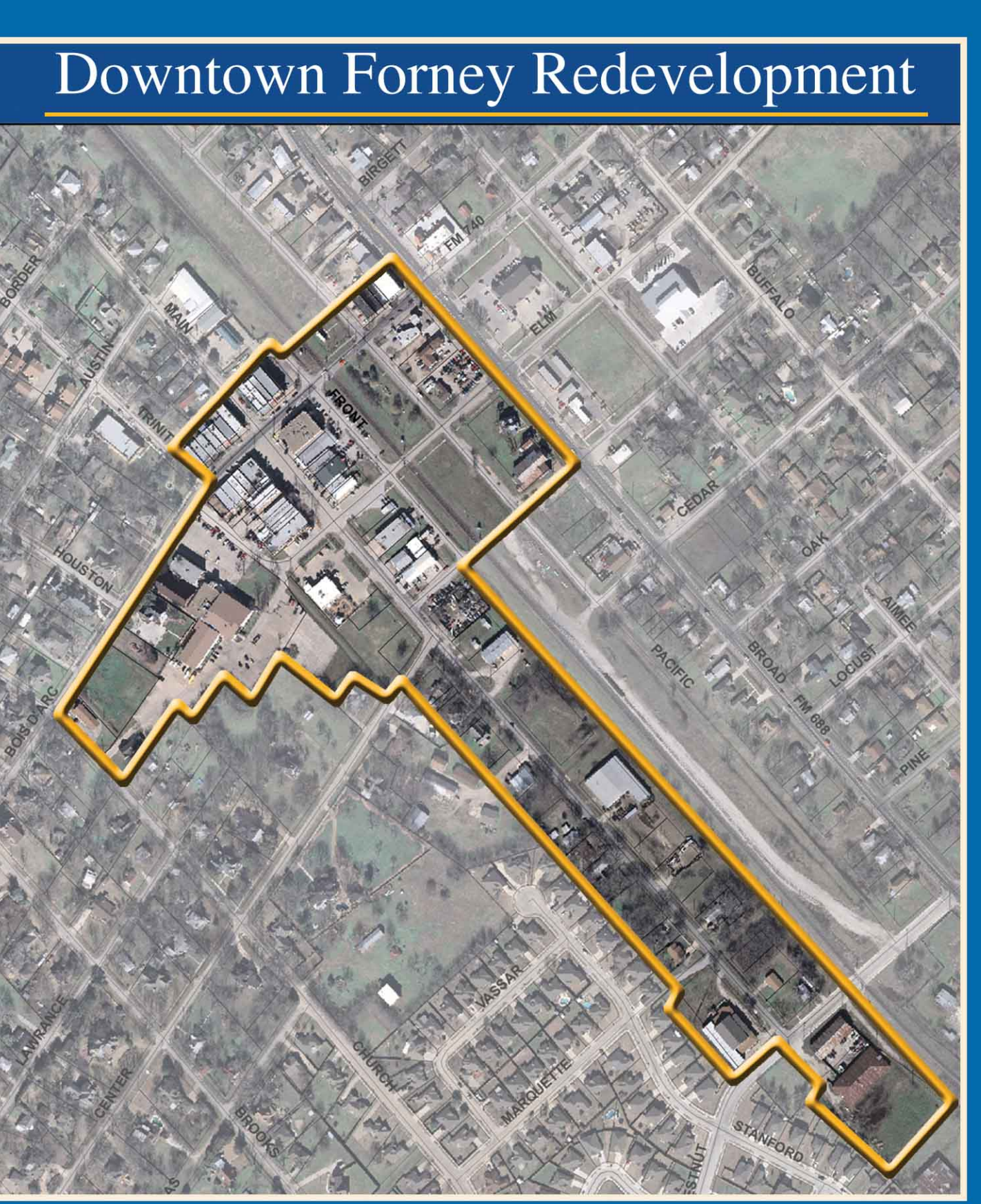
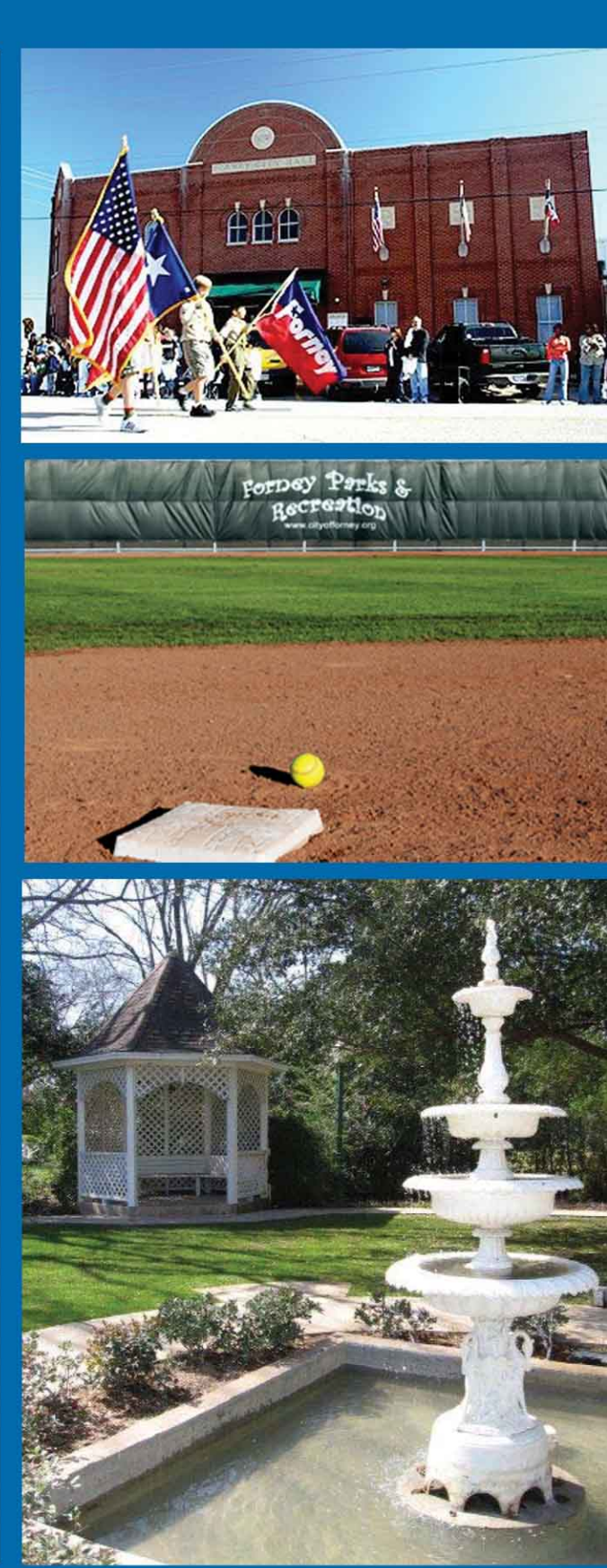
- NEIGHBORHOOD
- RETAIL
- COMMERCIAL
- PARKS
- PLANNED DEVELOPMENT
- DOWNTOWN
- CITY BOUNDARY
- ETJ BOUNDARY



FORNEY MEANS BUSINESS

FINISH-OUT READY SPACE AVAILABLE

OFFICE • RETAIL • LIGHT INDUSTRIAL



FORNEY
LIMITS WITHOUT LIMITS
TEXAS

NUMBERS DON'T LIE. THEY TELL US YOU BELONG HERE.

\$58 million new residential

\$17 million new healthcare development

\$65 million road projects

FORNEY
Chamber of Commerce

Forney is a community of partnerships.
Visit welcometoforney.com
FISD, Chamber, City, EDC and Kaufman County Web links plus links to Forney area organizations.

City of Forney

Forney's mission is to work together to build a sense of community in a safe environment, while attracting quality growth in a family oriented atmosphere.

FEDC promotes economic strength for the City of Forney by expanding and diversifying the local tax base through business development, financial reinvestment and community partnerships.
Incorporated 1865

Forney Chamber of Commerce

The Forney Chamber of Commerce exists as a vibrant business network connecting its members with the community to provide continued growth & prosperity.

- 250+ Members
- Annual Awards Banquet
- Annual Auction
- Annual Golf Tournament
- After-hours Mixers
- Monthly Membership Luncheons
- Ribbon cuttings

Forney ISD

In partnership with parents and community, Forney ISD will create and sustain an environment to maximize the potential of each learner.

- 79.8 Square Miles • 8,300+ Students • 14 Campuses • 15 to 1 Teacher to Student ratio • Attendance rate 96.4%
- Dropout rate 1.6% • Average ACT Score 22.1
- Average SAT Scores 1006 • TAKS Scores, grades 3-11: Reading - 96%, Writing - 96%, Mathematics - 92%, Science - 92%, Social Studies - 97%
- Laptops are provided for all students in the 5th - 12th grade throughout the academic school year.

Economic Development Corporation
PO Box 826
Forney, TX 75126
972-564-5808
edcinfo@cityofforney.org
forneytexasedc.org

Community Development
101 E. Aimee Street
PO Box 826
Forney, TX 75126
972-564-7384

City Administration
101 E. Main Street
PO Box 826
Forney, TX 75126
972-564-7300
cityofforney.org

Public Works
402 N. Bois D' Arc
PO Box 826
Forney, TX 75126
972-564-7340