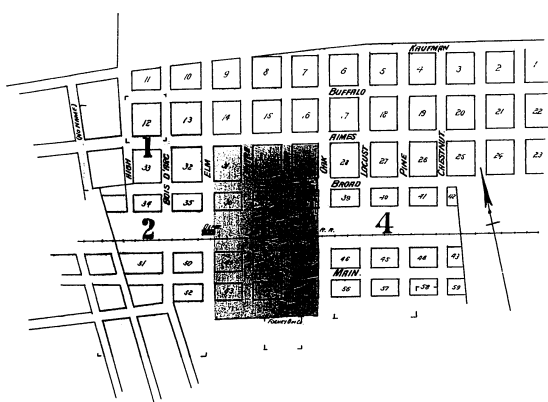




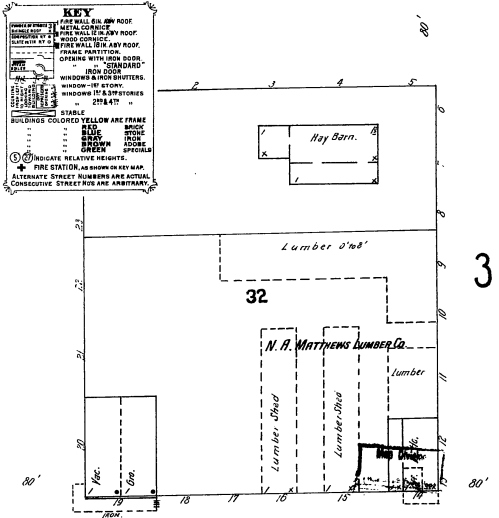
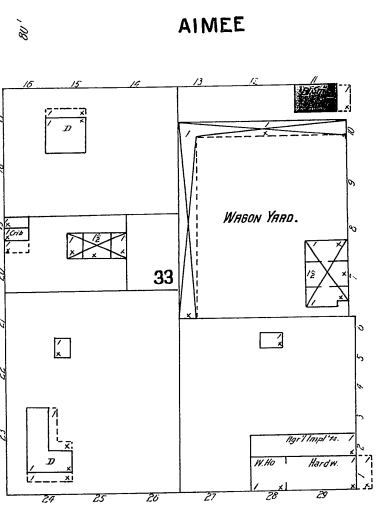
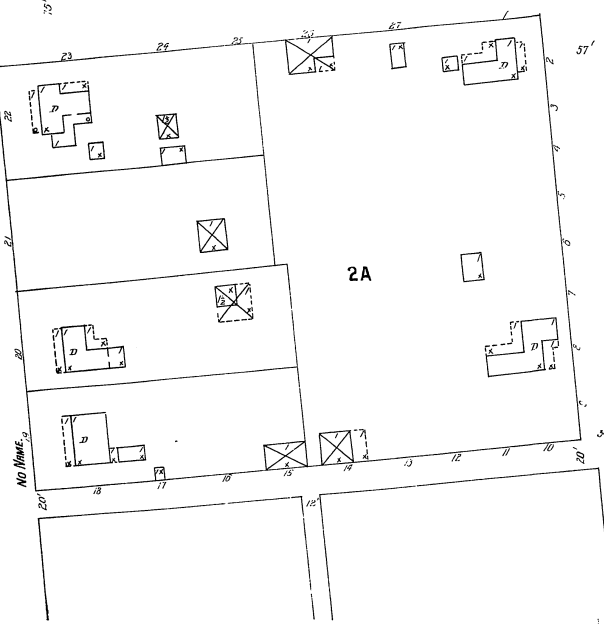
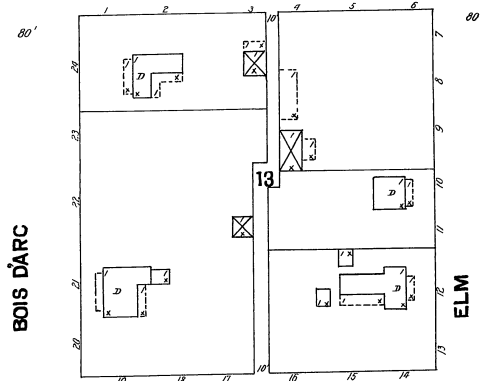
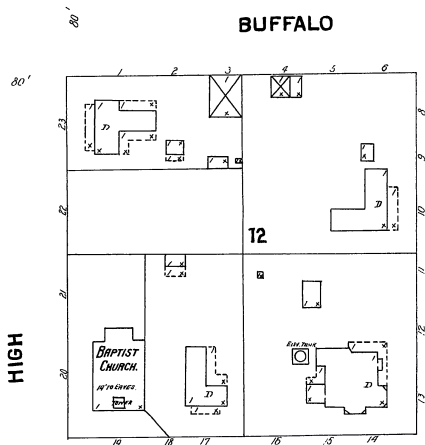
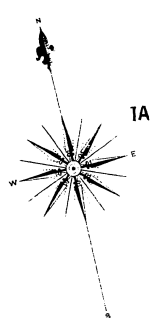
**-NOTE-**  
NO LINE MAPS OF RAIL RIGS,  
WATERWORKS, PUMPS &  
POWERPLANTS, STREETLIGHTS  
OR WAREHOUSES.



**INDEX.**

STREETS.	ALERT	ALERT	ALERT
Aimee, A	1, 3 & 4	Oak, O	3 & 4
Austin, A	1, 3 & 4	Pine, P	4
Bois D'Arc, B	1 & 2	Trinity Ave., T	2
Broad, B	1, 2, 3 & 4		
Buffalo, B	1	<b>SPECIALS.</b>	
Cedar, C	3	Budget & Kimbough, B	3
Centre, C	3	Baptist Church, B	3
Chestnut, C	3	Hamilin & Crawford, Hay Warehouse, B	3
Elm, E	1, 2 & 3	Borne, H. N., Hay Warehouse, B	3
High, H	1	Brooks, J. K., Hay Warehouse, B	3
Loanst., L	4	Gain, S. R., Hay Warehouse, C	3
Main, M	2, 3 & 4	Colored Masonic Hall, C	3
		Dallas Brewery Depot, D	4
		Davis, J. M., Hay Warehouse, Y	4
		Forney Hay Co., F	3
		Haley, H	3
		Gin and Cotton Co., G	3
		Goodman, W. J., Hay Warehouse, G	2
		Layden, M., Hay Warehouse, L	3
		McKellar, D. G., Hay Warehouse, M	3
		Matthews, N. A., Lumber Co., M	1
		Owen, G. W. & Co., Lumber, O	2
		Ponder & Weeks Lumber Co., P	2
		T. & P. H. R. Depot, T	2 & 3
		Yates, W. H., Hay Warehouse, Y	3

THE CURRENT  
POPULATION  
FOR 1900  
IS 17,554,714  
CENSUS OF 1900  
1908



**KEY**

- STABLE
- COLORED YELLOW
- BRICK
- STONE
- BROWN
- ROCK
- POOR
- CRACK

INDICATE RELATIVE HEIGHTS  
FIRE SYSTEM NUMBER MAY VARY  
ALTERNATE STREET NUMBERS ARE ACTUAL  
CONSECUTIVE STREET FOR ANY ARBITRARY

