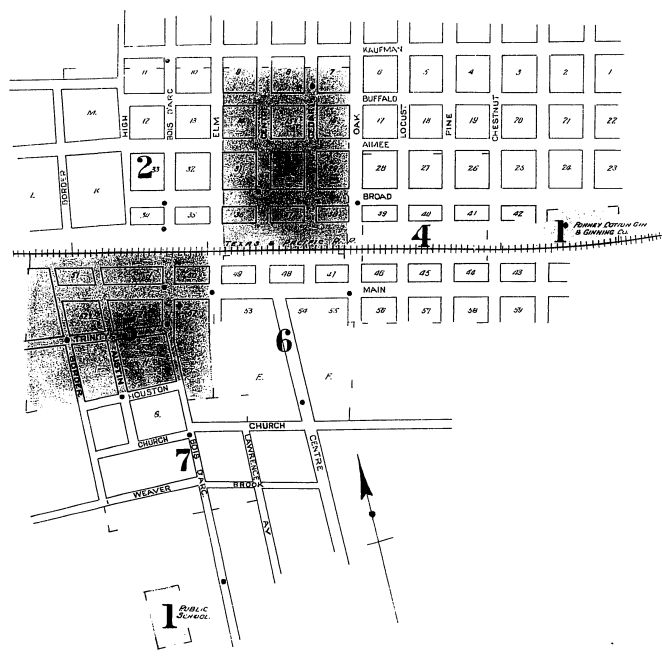
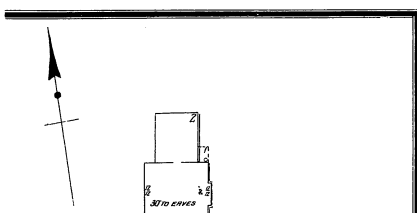




KEY: Legend for map symbols including building types, materials, and street features.



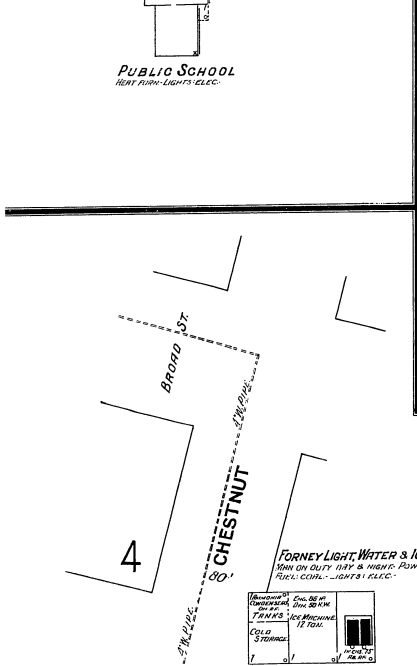
WATER FACILITIES: Description of water supply system installed in 1910. FIRE DEPT: Description of volunteer fire department with hose carts and equipment.



PUBLIC SCHOOL: Note about light, water, and electric service for the school building.

INDEX

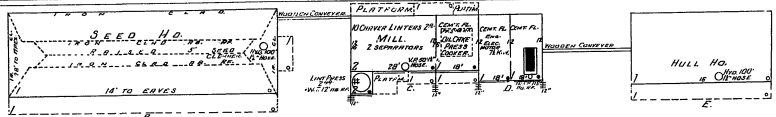
Table listing streets and their corresponding page numbers in the index. Includes sections for 'STREETS' and 'SPECIALS'.



FUEL OIL TANK: Note about the location and use of fuel oil tanks for the Forney Light, Water & Ice Co.



42: Reference number for the site plan.



FORNEY COTTON OIL & GINNING CO.

Notes describing the layout and components of the cotton oil and ginning plant, including machinery and structural details.

