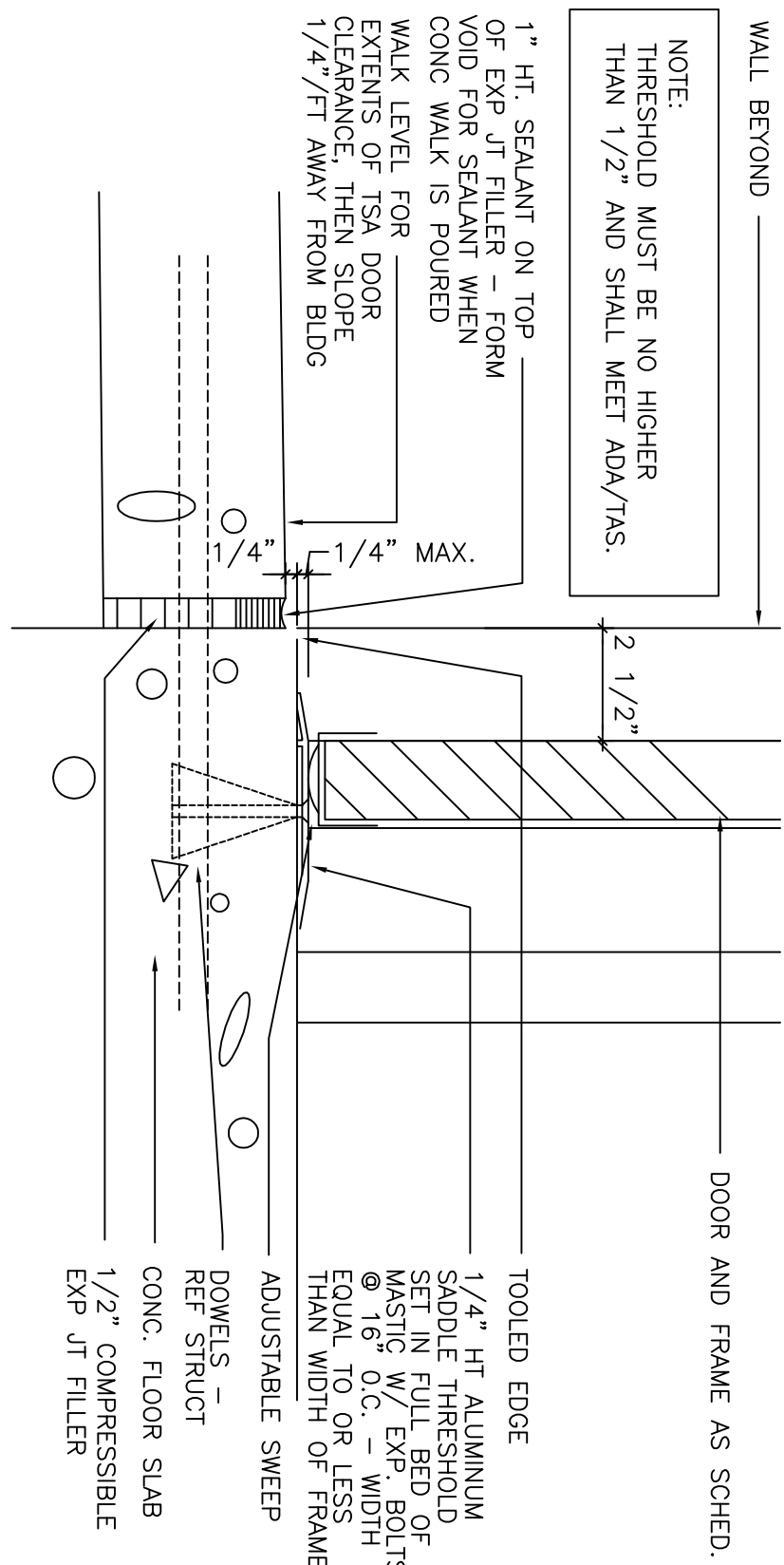


ADDITION, RENOVATIONS AND RECONSTRUCTIONS FOR
**SPELLMAN MUSEUM
OF FORNEY HISTORY**
200 S. BOIS D'ARC STREET - FORNEY, TEXAS 75126

EXTERIOR
DETAILS

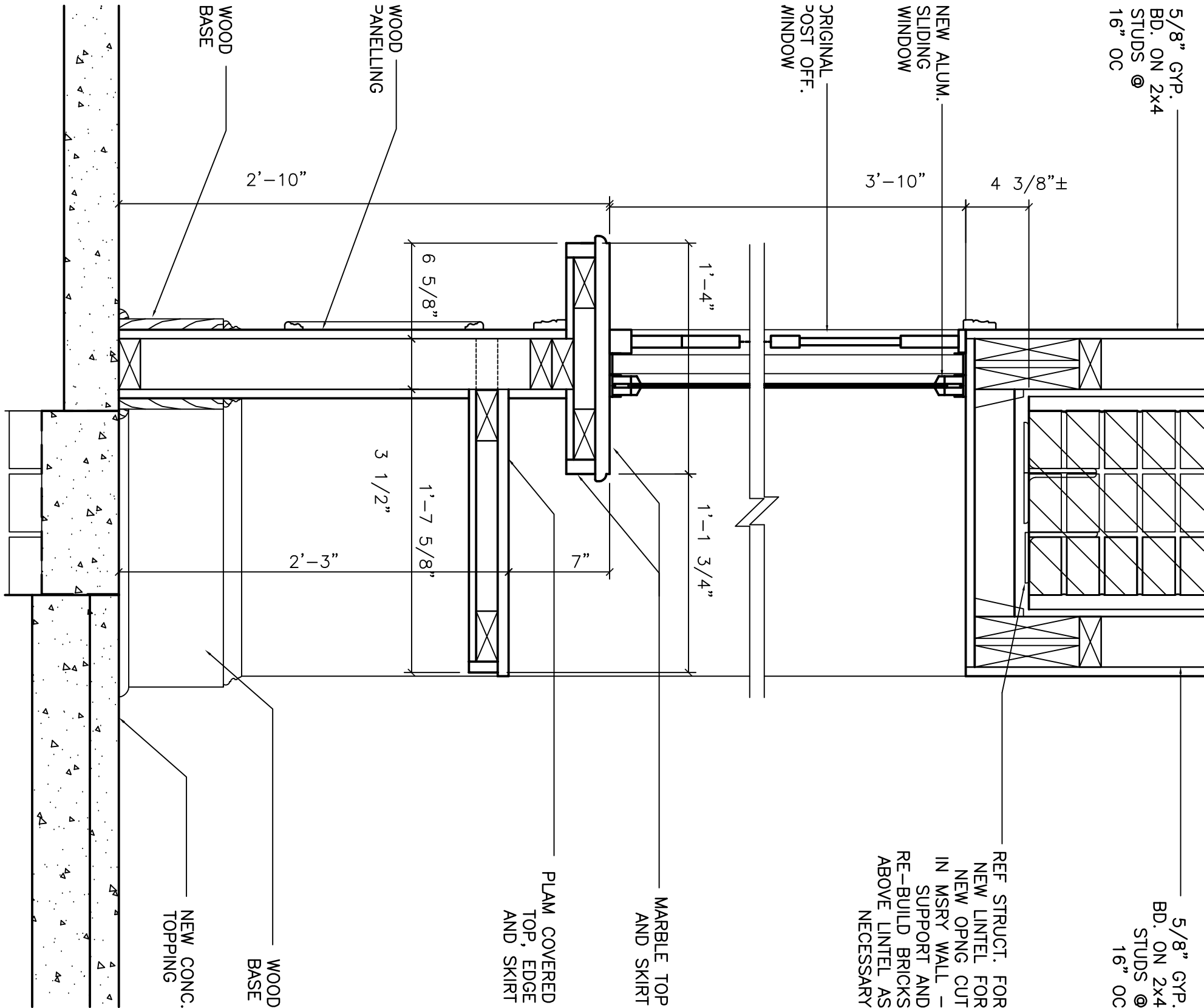
AUGUST 21, 2012

A2.5



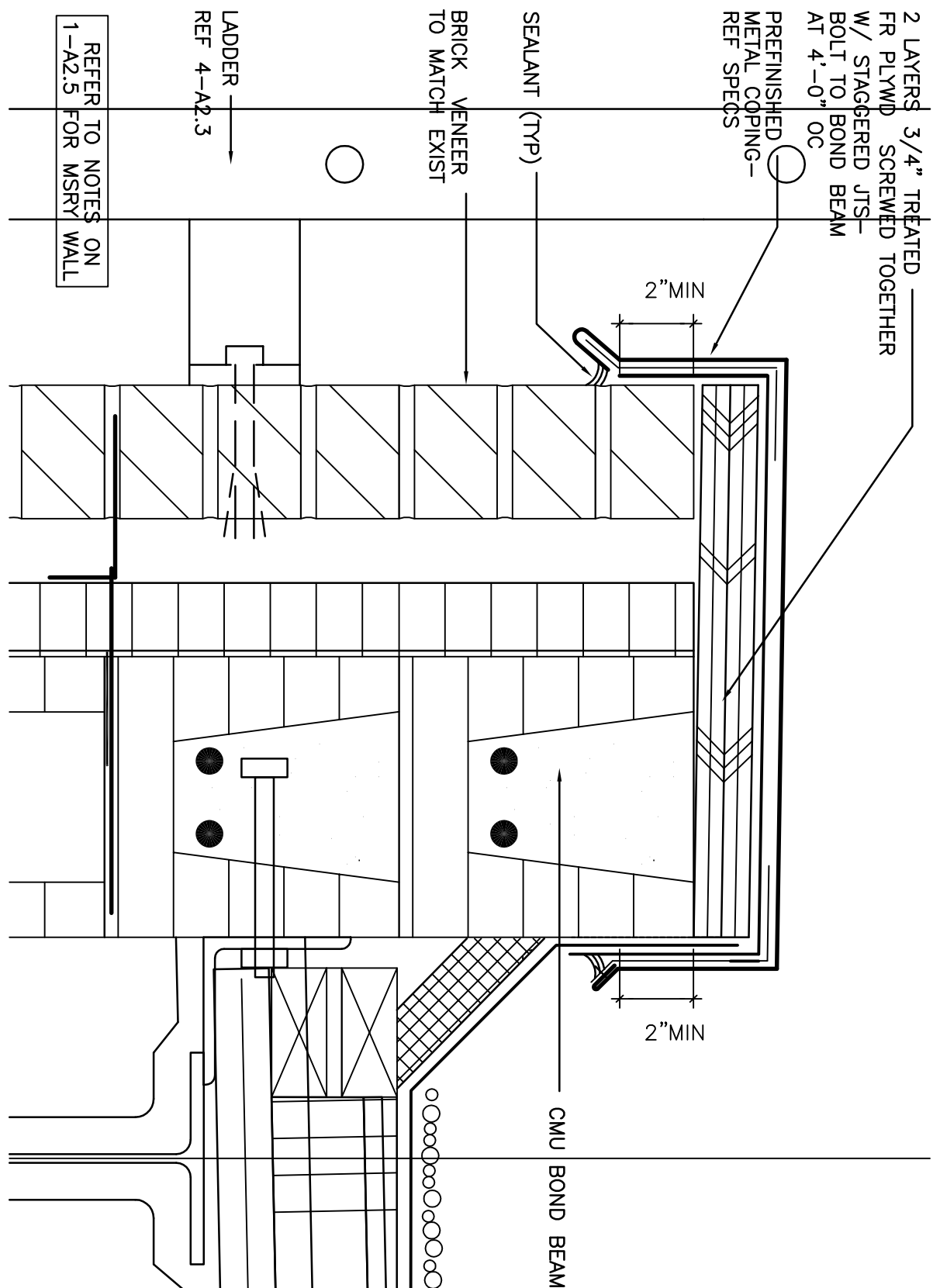
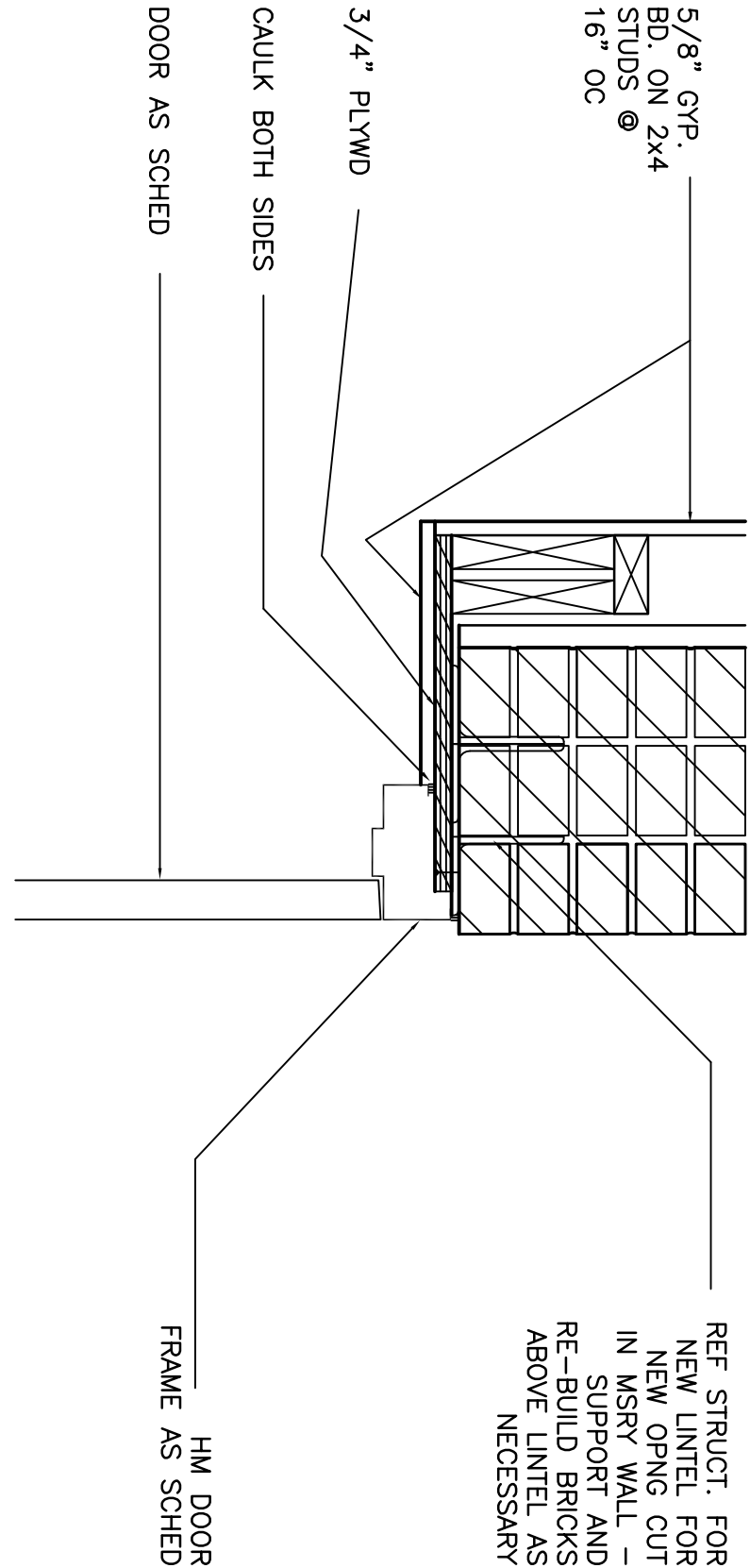
7 THRESHOLD DETAIL

SCALE: 3/4\"=1'-0"



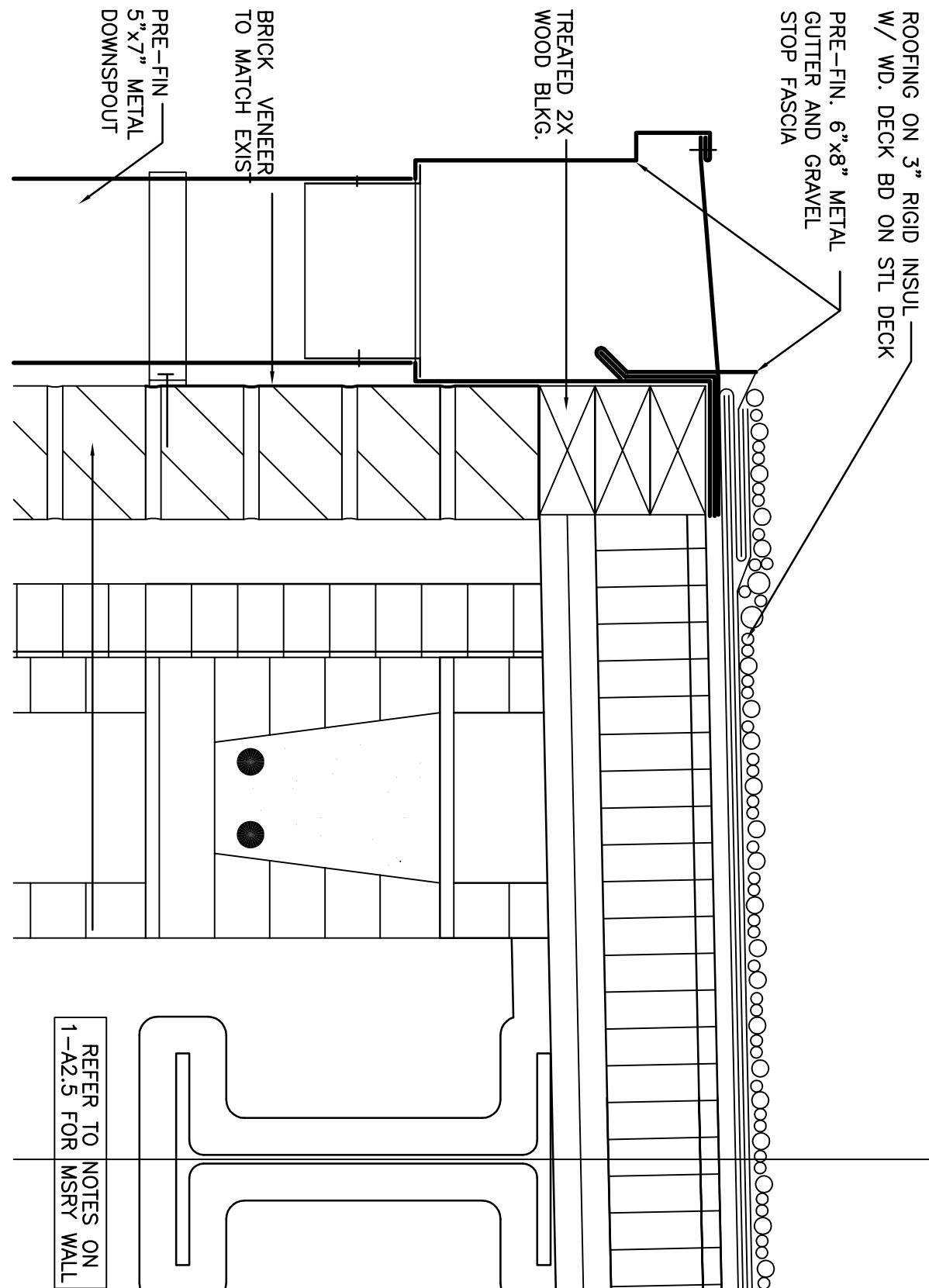
8 COUNTER AT NEW WINDOW TO OFFICE

SCALE: 1 1/2\"=1'-0"



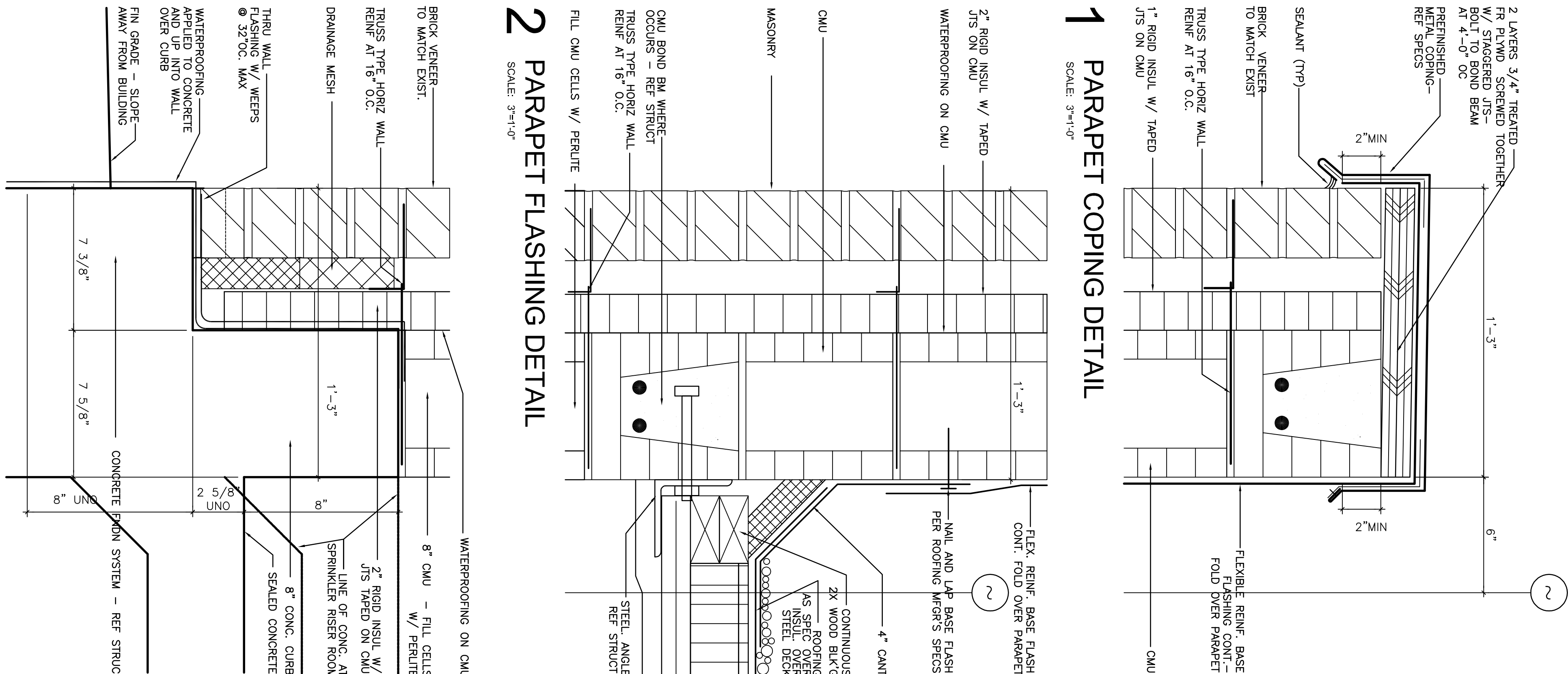
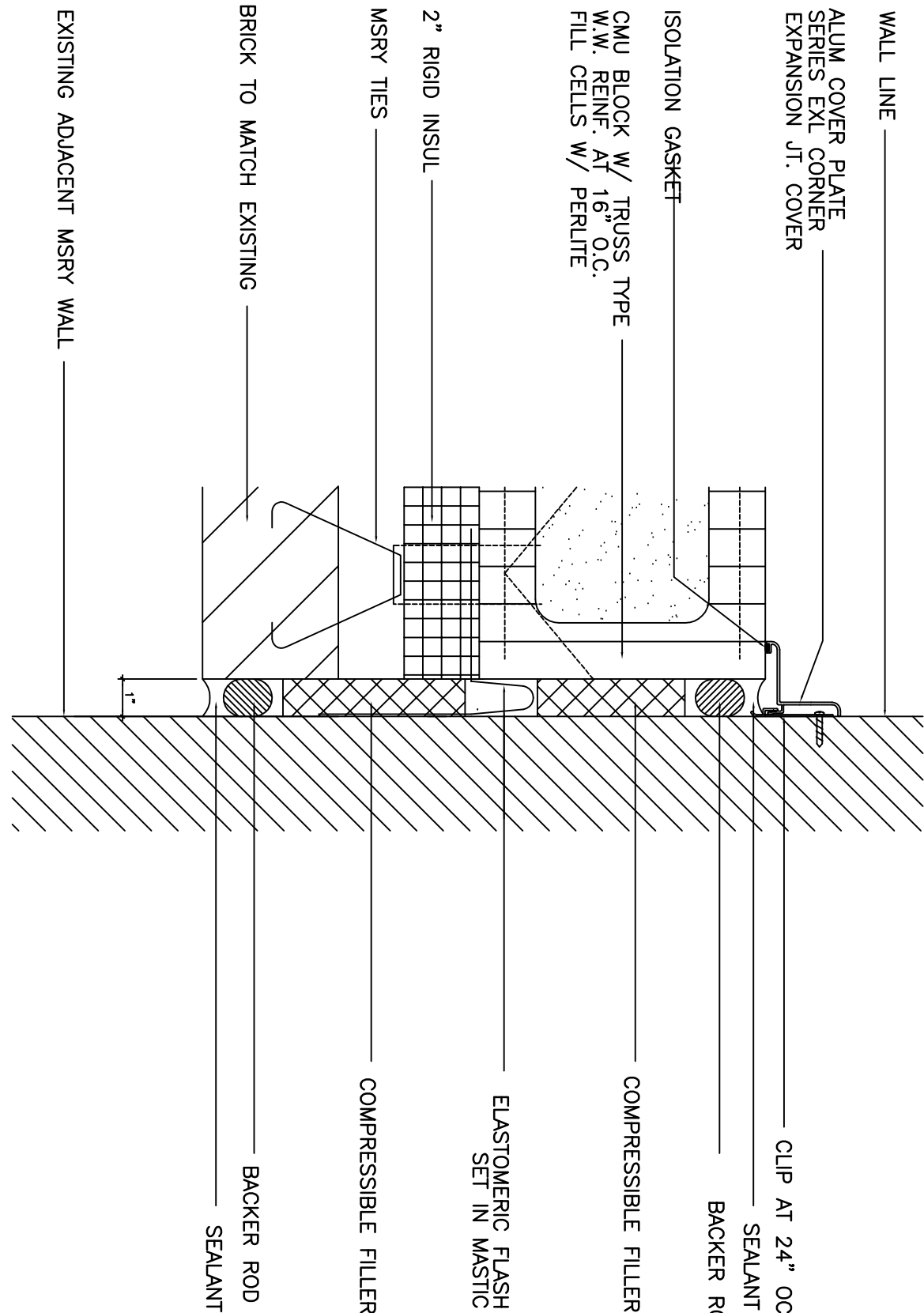
4 PARAPET COPING DETAIL

SCALE: 3/4\"=1'-0"



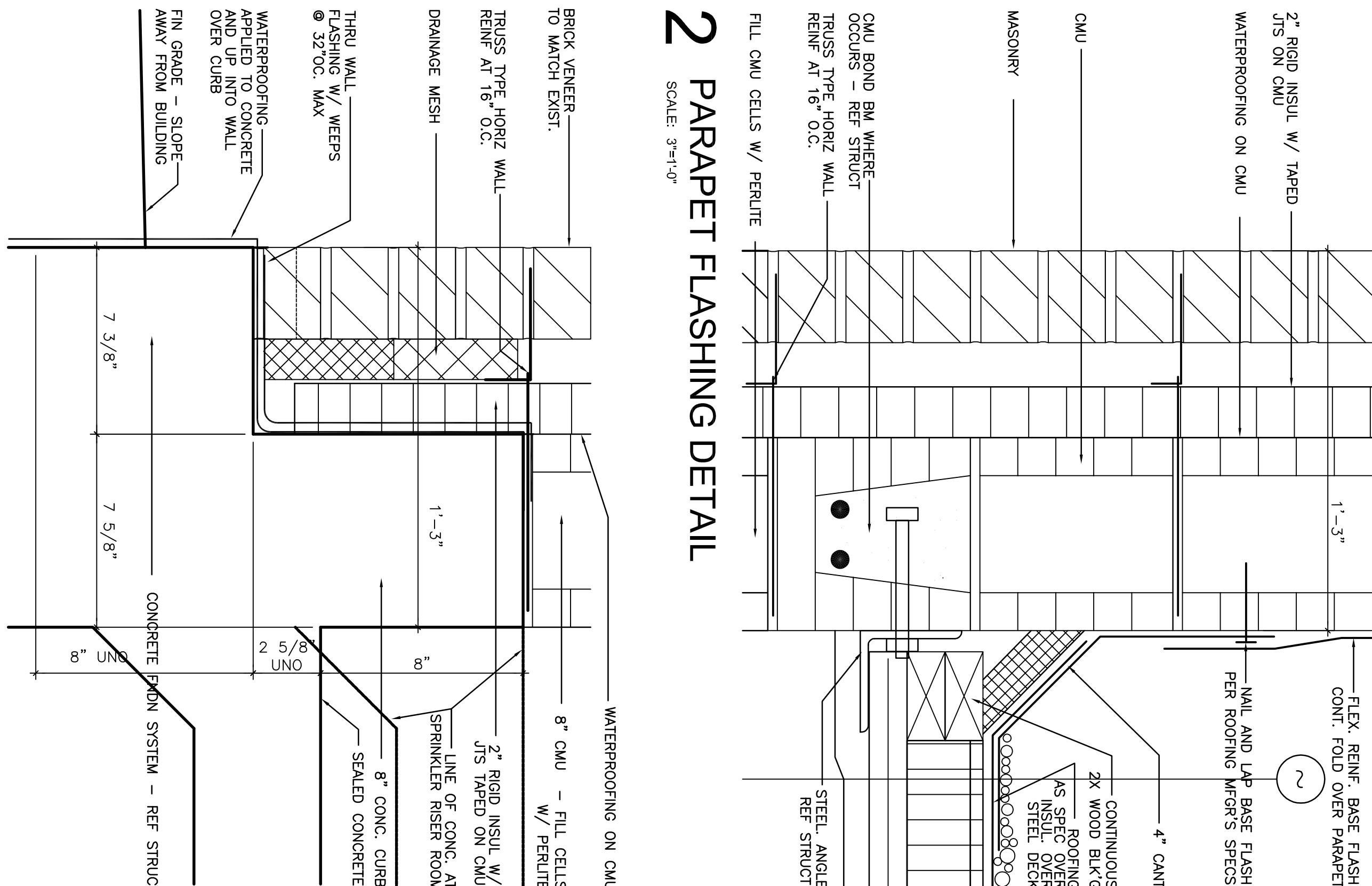
5 GUTTER DETAIL

SCALE: 3/4\"=1'-0"



2 PARAPET FLASHING DETAIL

SCALE: 3/4\"=1'-0"



3 BRICK SHELF DETAIL

SCALE: 3/4\"=1'-0"

6 EXPANSION JOINT DETAIL

SCALE: 3/4\"=1'-0"

9 DOOR HEAD DETAIL -JAMB SIMILAR

SCALE: 1 1/2\"=1'-0"